

A Stakeholder Takeover of National Energy Policy

Ton van Dril, ECN Policy studies, november 2017



ECN Policy Studies

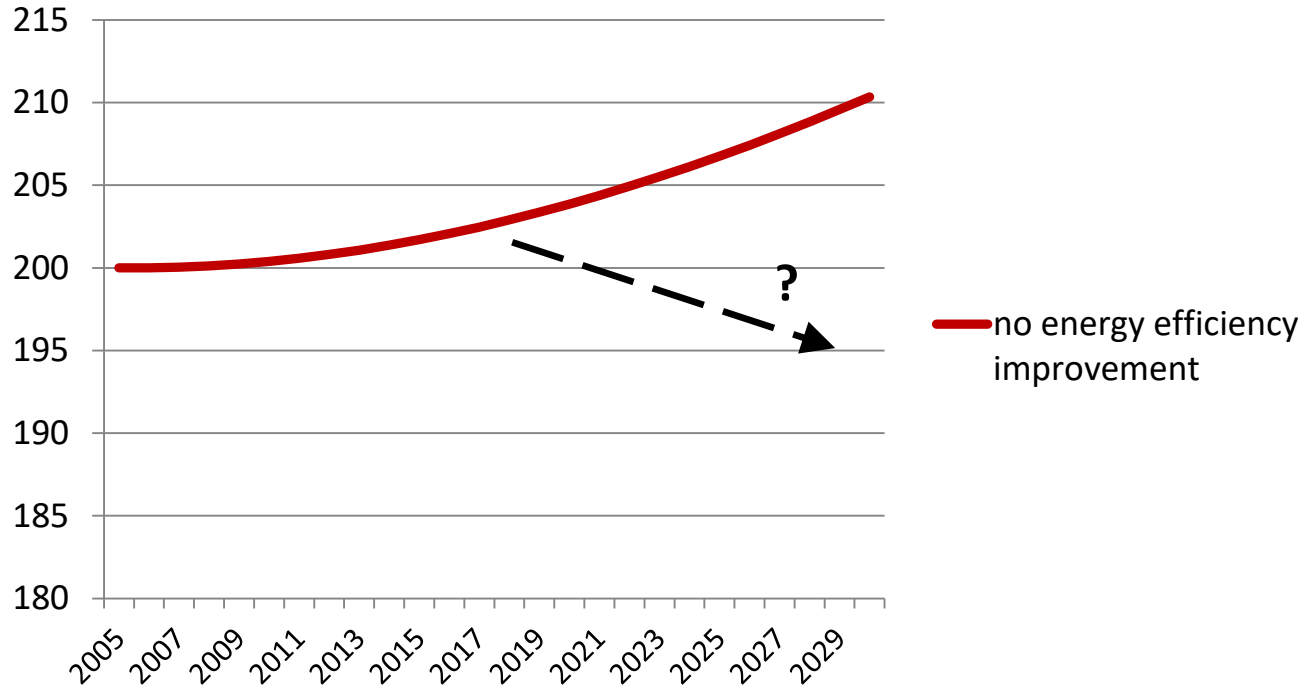
- Multidisciplinary unit of ~60 scientists
- Founded by Ministry of Economic affairs
- Over 40 years of supporting energy policy
- Local, National, European, International projects
- Long history on projections, policy analysis and monitoring
- Now situated in Amsterdam Sloterdijk
- Per 1-1-2018:
 - Direct national supporting tasks will be transferred to PBL (rekenmeesterfunctie)
 - Transition research and consulting: ECN becomes part of TNO



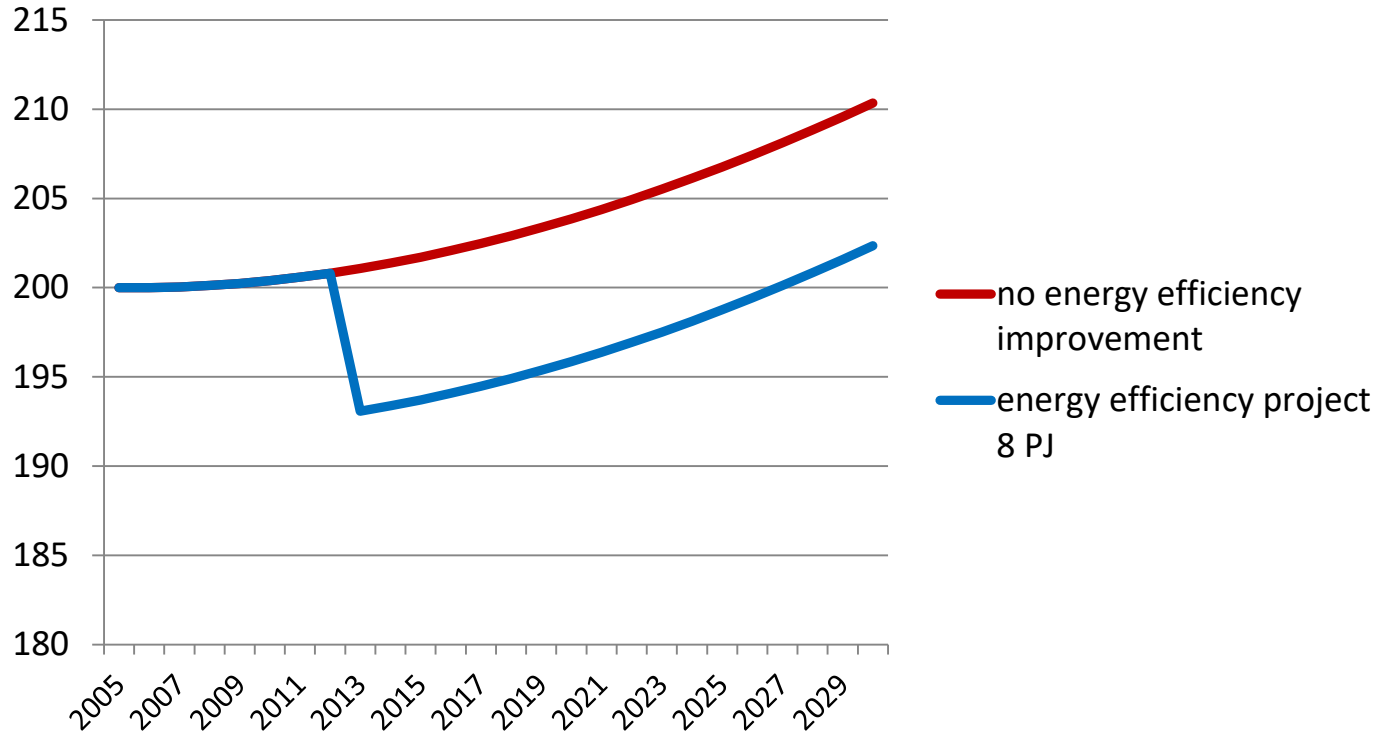
Outlooks: ex ante policy evaluations



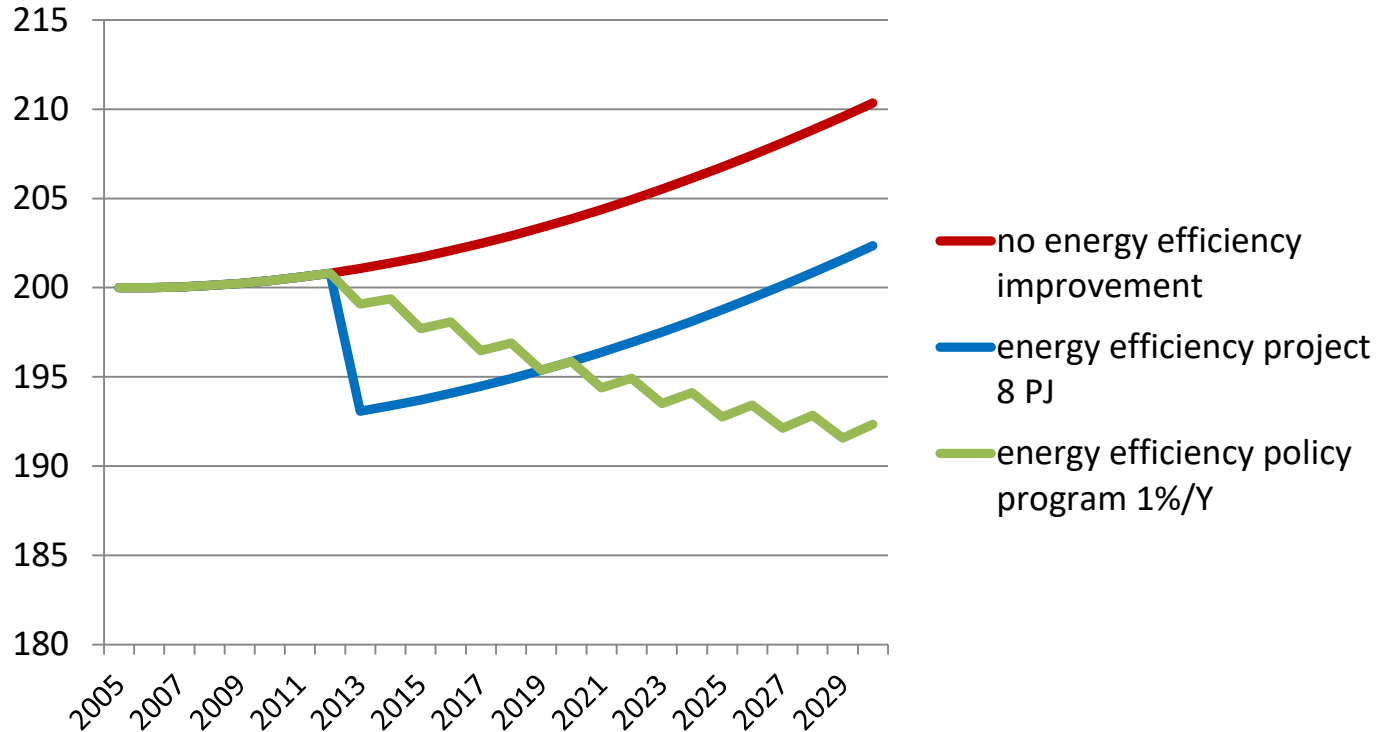
Efficiency programme vs. policy (PJ)



Efficiency programme vs. policy (PJ)



Efficiency programme vs. policy (PJ)



Energy efficiency, how is it defined, measured and projected?

- Performing the same Activity with less energy input
- Energy Relevant Activities (ERA's) are separately and consistently defined over the years (m2 office space, tonnes of ethene, etc.)
- ERA's are used both in monitoring and in projection models
- Scope on primary demand, so including the power and heat generation supply chain
- Fuel use only for energy purposes (no feedstocks)

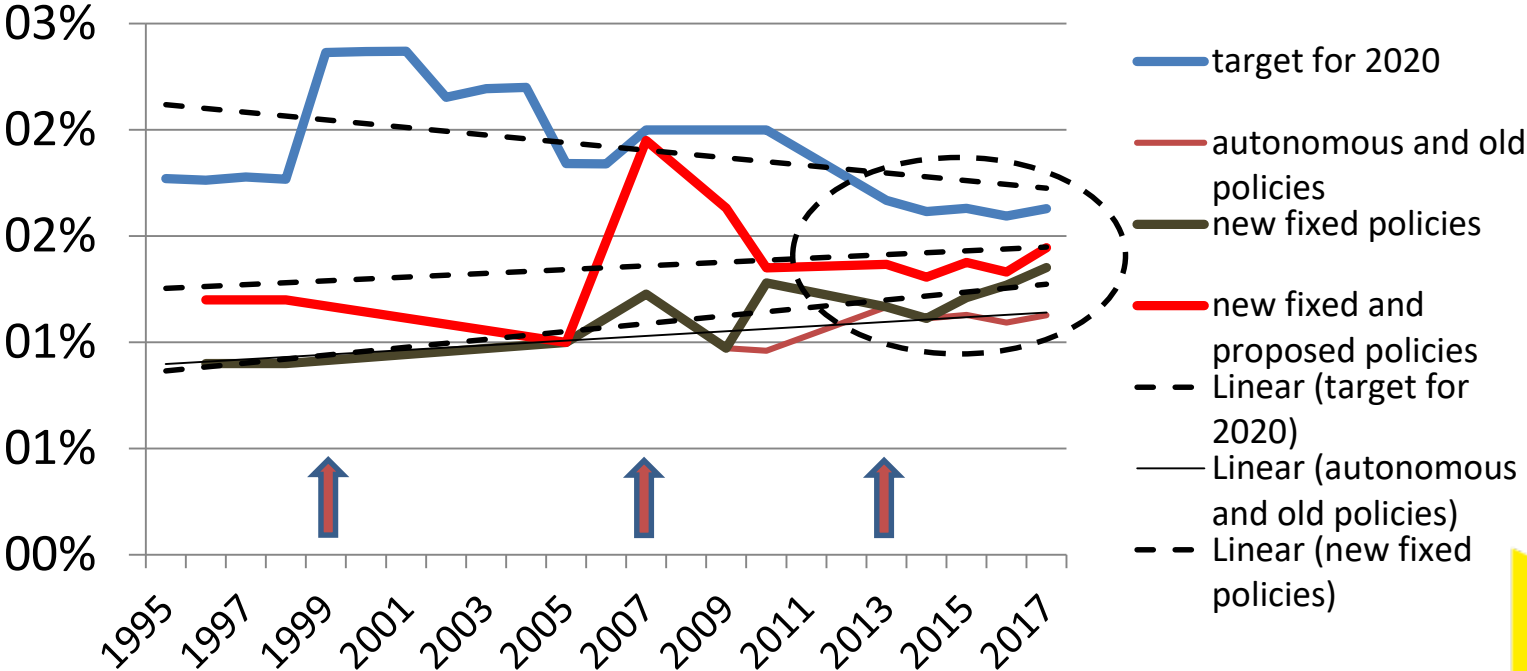


So what is the analysis?

- Over last decades, how effective are energy efficiency policies?
- Analysis is based on bottom up consistent ex ante evaluations
- Indicator: Average annual energy efficiency improvement 2010-2020 in %
- Effectiveness is defined as: how close is a policy scenario projection to the policy target?
- 11 Data points: NEV projections from 1995-2017
- We looked at stated targets, autonomous effects, fixed policies and proposed policies



Energy efficiency improvement projection results for 2010-2020, %/year



Possible explanations of these higher projection results and the convergence with targets

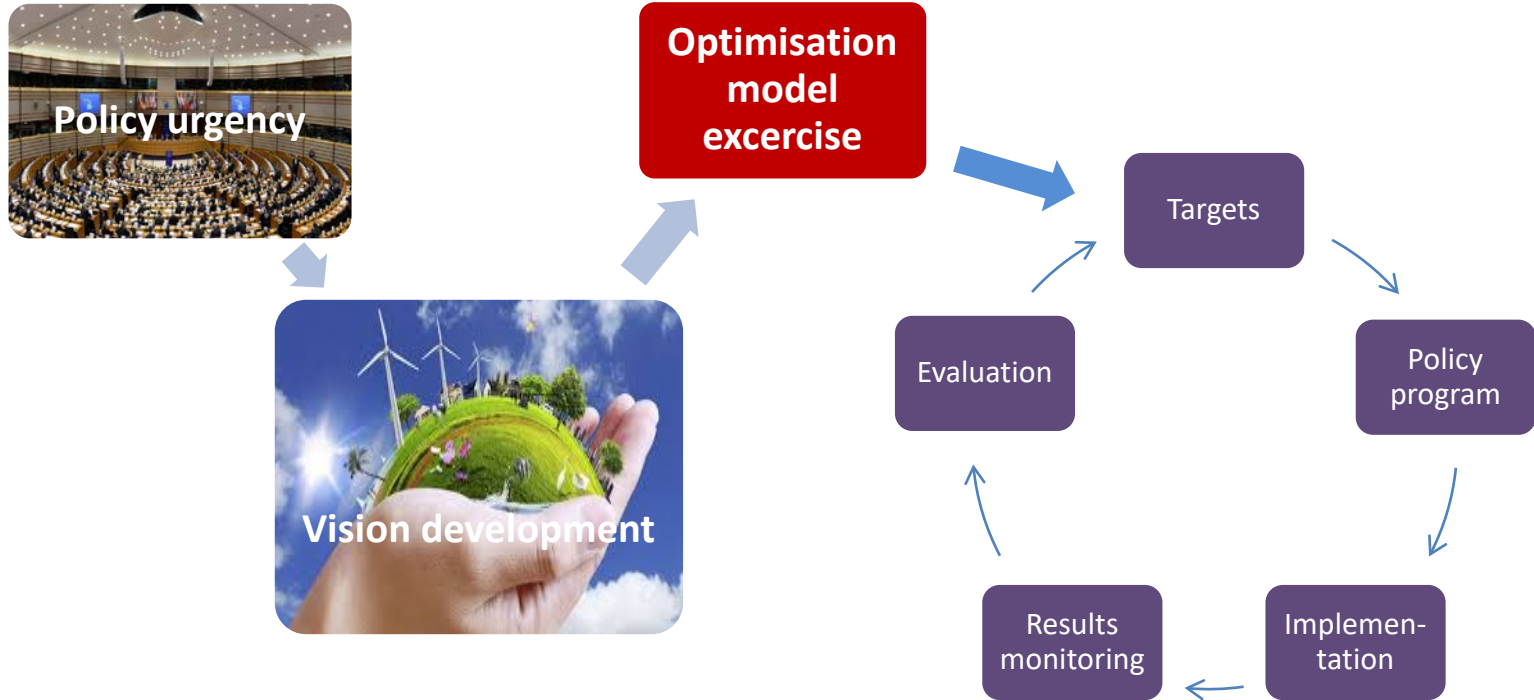
- Targets are lower, which may have contributed to realism and hence the confidence to achieve results
- In the earlier years, it was politically easy to express high ambitions for a distant future, but now as we approach 2020, policies and politicians become more serious.
- More frequent (annual) evaluations help to draw attention and speed up reactions.
- Diverse and powerful stakeholders have first negotiated on targets, and have committed to a public social contract, including government on different levels.



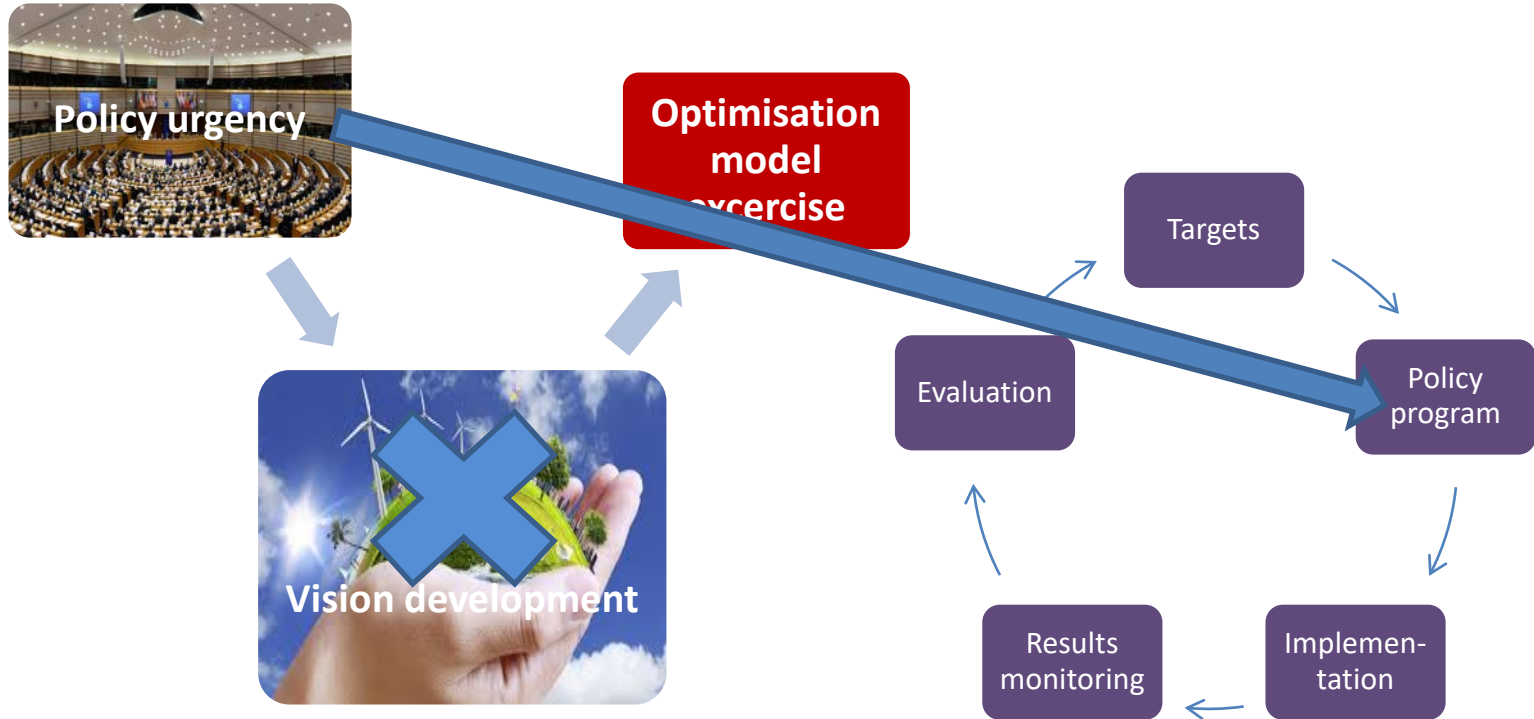
What happened in 2013?



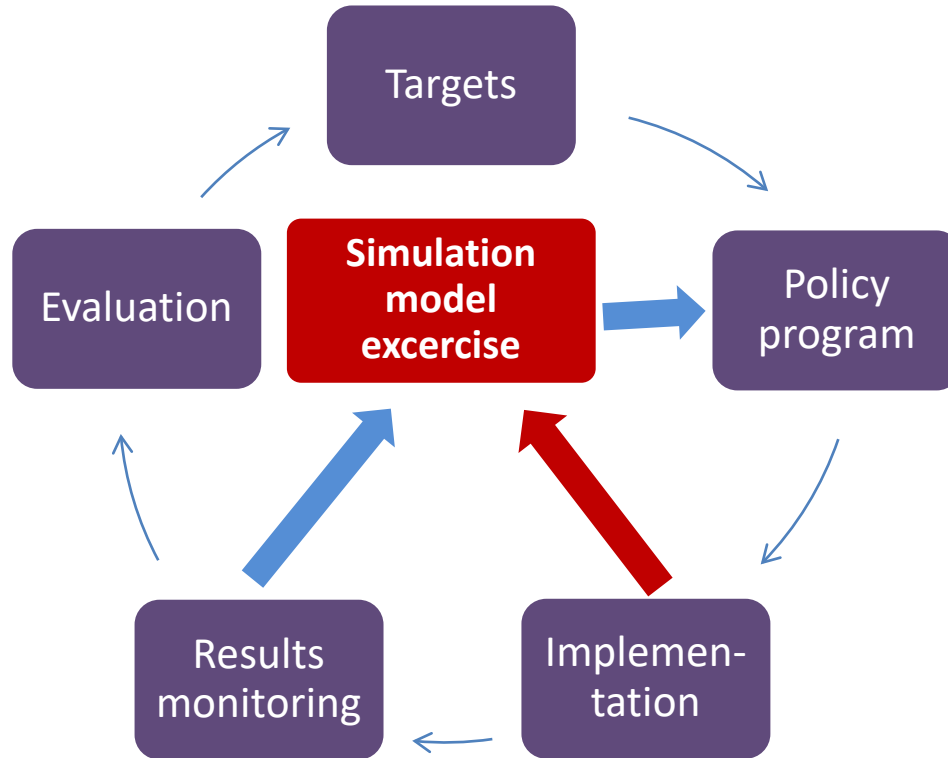
Model use in policy cycles



What happened in 2013?



Model use in policy cycles: taking a shortcut



Findings

- Energy efficiency policies together with stakeholder actions have become more effective in recent years
- Features of the National Energy Agreement (2013) probably contribute to this effectiveness.
- A policy based plan-do-check-act cycle has never been explicitly implemented by government
- However, this cycle has now been implemented based on a broad agreement with social stakeholders, with no legal status
- This cycle design may contribute to the effectiveness because it focuses on projected results and doesn't wait for actual monitored data.

