

The following are tips and a suggested content format for the IEPPEC Conference

You are free to use you own template with the addition of 2017 IEPPEC Bangkok as a footer



What is in your session room

- Table
- Tent Card with your Name
- Projector
- Computer
- Session Moderator



What to bring

- Any reference papers
- Your flash drive
- A bio if you have not already given it to your moderator



When to install your presentation: Upon arrival on Wednesday

- All room computers will be open and ready for loading your presentation in your session room. This computer is assigned to your room.
- Once installed, re-name it with your last name

OR...



When to Install at all other times

- Computers will be in the room by 8:00 am each morning
- Please avoid the half-hour breaks for loading as the next speaking team will need access to the computer



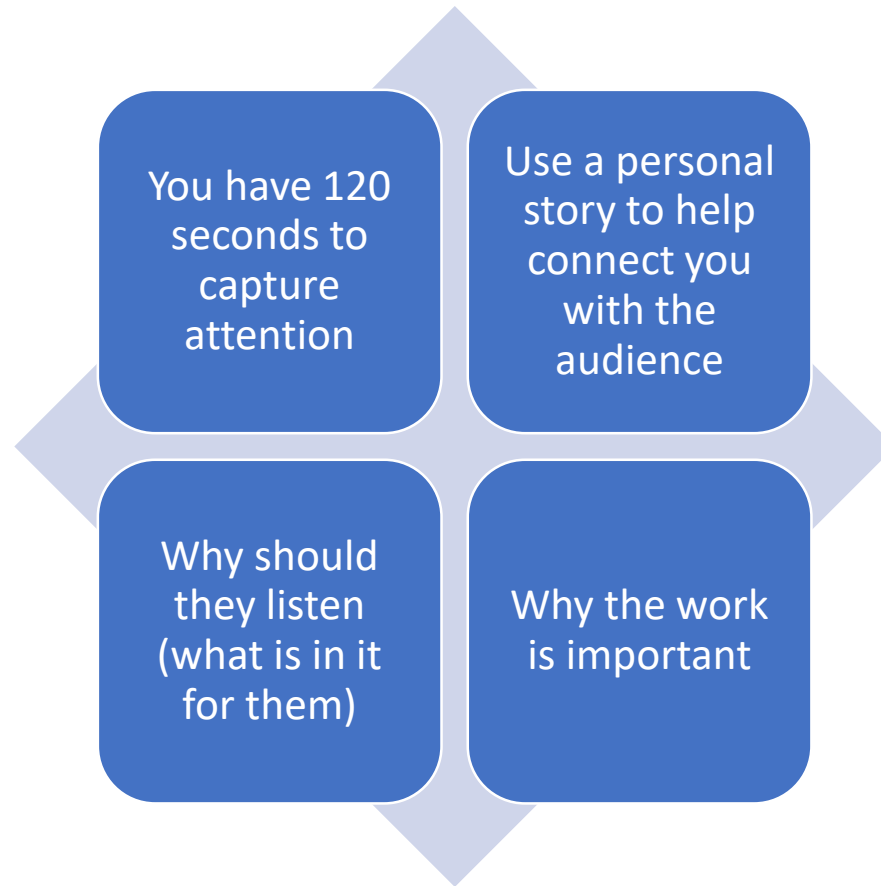
Content presentation tips

- For PowerPoint specific guides (font sizes, colors etc.), see the “PowerPoint” presentation

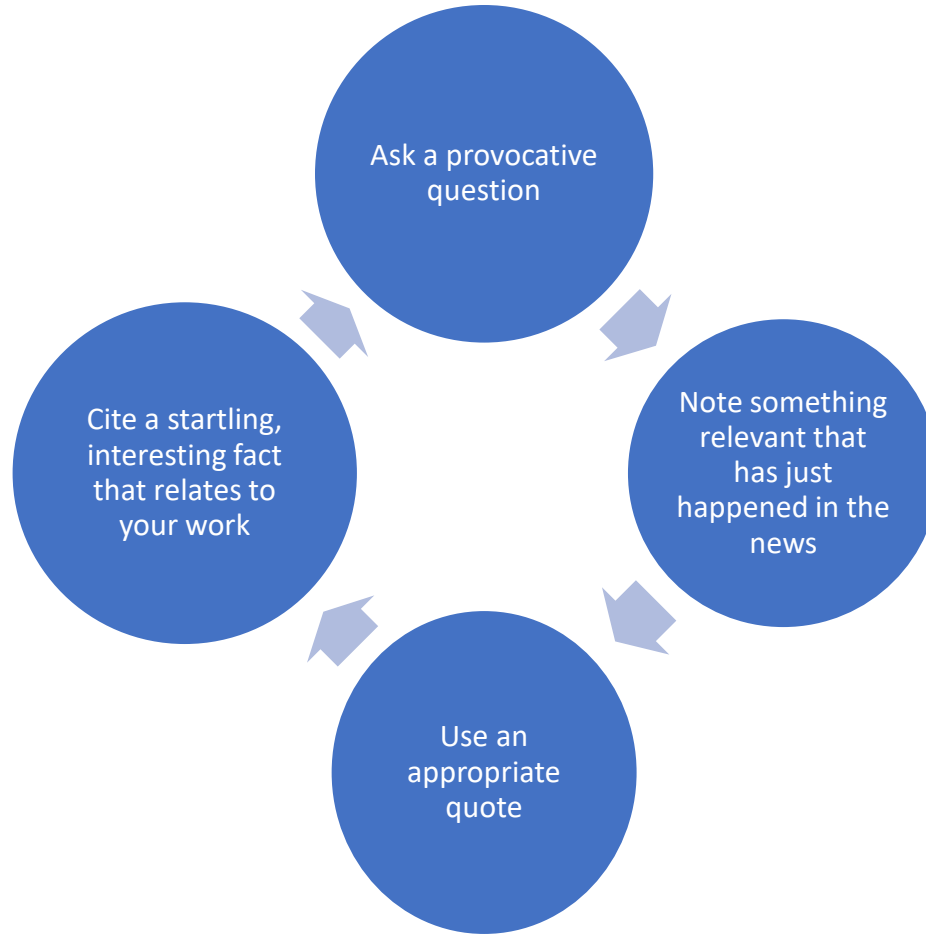




How to OPEN



Tips on Opening

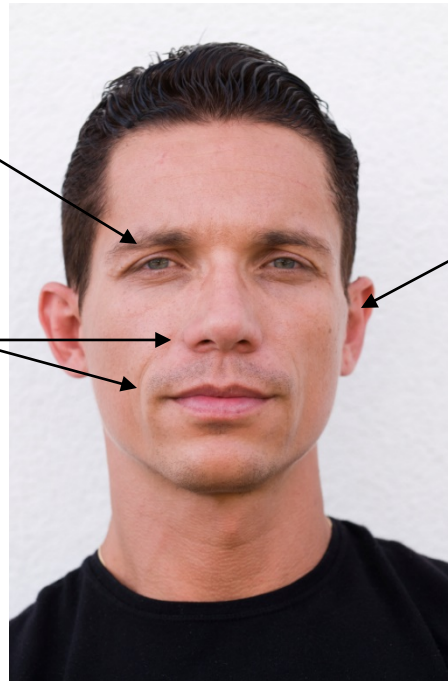


This is how we take in information

Eyes 75%

Hearing 13%

**Smell, taste
and touch
12%**



Use both words and pictures

Words and
pictures are 6
times more
powerful when
used together



However—6 deadly sins

“I know you cannot read this”

- Text that you cannot possibly read

Too many words on a slide

- The author proposes a constructive path forward toward a future energy efficiency (EE) program evaluation paradigm in the era of “Big Data” (Big Data refers to the increasingly rapid availability of high-frequency utility data such as from smart meters, and the use of such data by advanced data analytics firms to support the advancement of energy efficient infrastructure). Firms that offer advanced real-time data analytics for EE programs envision a new paradigm in which current incentive and evaluation structures are either no longer necessary, or will be radically transformed. This paper uses impact evaluation concepts, including pre existing versus counterfactual baselines, Total Resource Cost (TRC), attribution of savings, and regulatory compliance, to demonstrate how the current landscape of EE program evaluation in the residential, commercial, and industrial sectors might be transformed to a future one which relies on readily available, facility-level, high-frequency energy and demand data. Based on the author’s experience with ‘traditional’ impact evaluation in the United States, which includes econometric and whole building energy modeling (BEM) methods to estimate custom and new construction savings, the resulting methods matrix is applicable in all jurisdictions where impact evaluation is performed. The mapping expands on prior industry literature (“Establishing Baselines for Industrial Energy Efficiency Projects”, Maxwell et al, 2011 ACEEE Summer Study on Energy Efficiency in Industry), clarifying traditional concepts such as gross and net baselines, and includes short-term, near-real-time EE data analytics and usage profile disaggregation methods alongside traditional due diligence verification methods. The paper argues, using actual examples such as new construction and equipment burnout projects, that Big Da

Too many slides for your time slot

- For a 15 minute slot, assume 12 slides

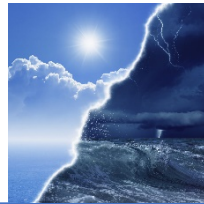


6 Deadly Sins

Avoid busy backgrounds use contrasts

- Avoid Busy Go for Contrast

Pictures that do not tell a story



Do not, under any circumstances, READ

- They can read, only you can tell the story

Your first 3 Slides


1 title slide (with your name etc)

1 opening slide-why this applies to them—consider a story

The “so **what**” of your work

120 seconds

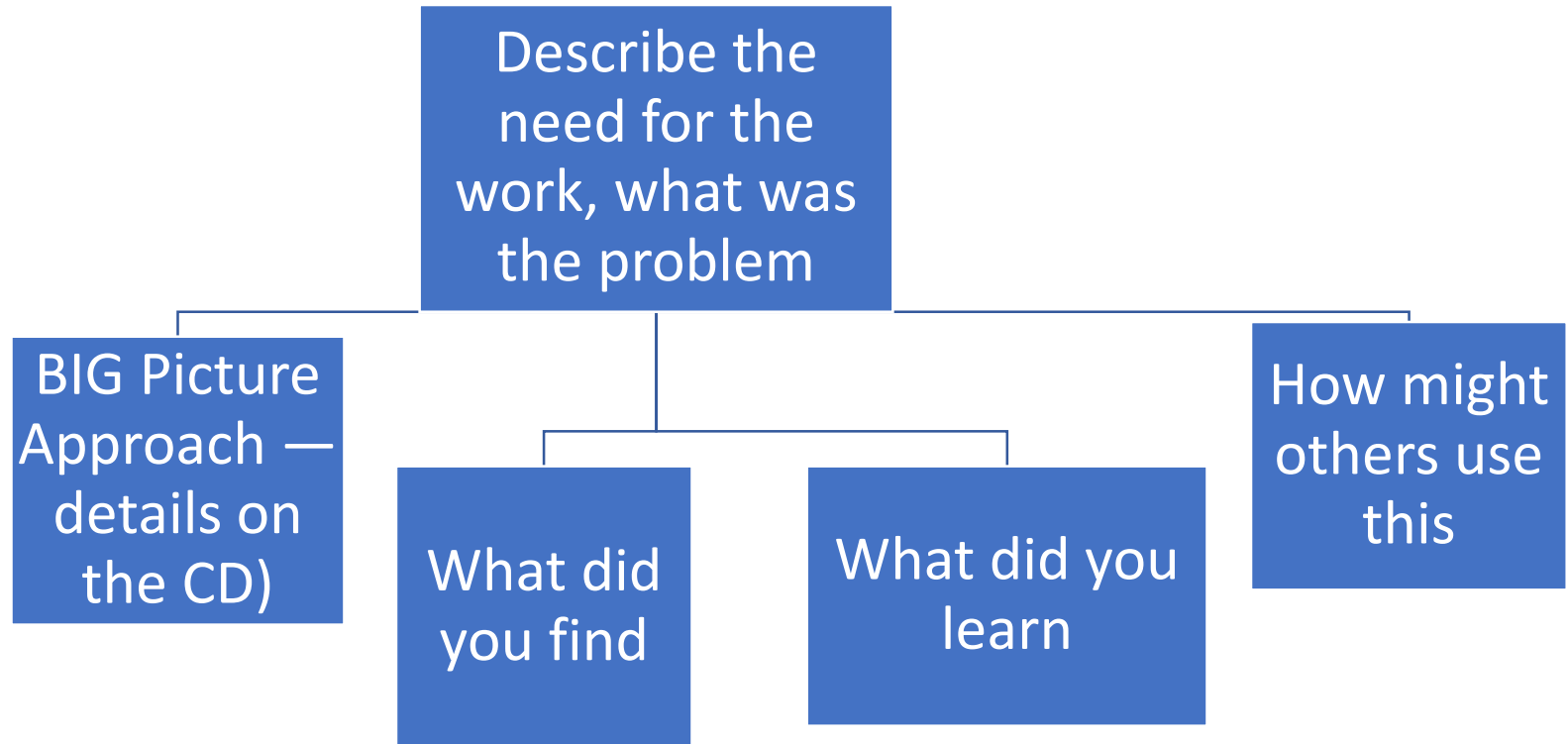




Keep
concepts
simple

- Translate numbers into charts
- Max 3-5 lines on a chart
- Max 3 colors
- One key point per slide

Content—12 minutes, 5 slides



Closing-Keep it simple and to the point! 3 Slides 120 seconds....

1. Say "In Closing"...
2. Invite them to use your work!
3. What they can expect if they look into your work and how to find it.

What people can do with your work
to solve XXX kind of problems.



Non-verbal

Ever listen to company disclaimers? NO!
Because they are delivered in monotone.

Think about your body language—do you believe your own work?



Non-verbal

